

Public Document Pack



Neuadd y Sir
Y Rhadyr
Brynbuga
NP15 1GA

County Hall
Rhadyr
Usk
NP15 1GA

Tuesday, 6 July 2021

Dear Councillor

INDIVIDUAL CABINET MEMBER DECISIONS

Notice is hereby given that the following decisions made by a member of the cabinet will be made on Wednesday, 14 July 2021.

1. **MONLIFE - MUSEUM SERVICE COLLECTIONS RATIONALISATION** 1 - 114

Division/Wards Affected:

CABINET MEMBER: County Councillor Lisa Dymock

AUTHOR: Rachael Rogers, Museums Manager

CONTACT DETAILS: Tel: 01873 854282

E-mail: rachaelrogers@monmouthshire.gov.uk

Yours sincerely,

Paul Matthews
Chief Executive

CABINET PORTFOLIOS

County Councillor	Area of Responsibility	Ward
Richard John	<p>Leader Lead Officer – Paul Matthews, Matthew Gatehouse</p> <p>Whole Authority Strategy and Direction Whole authority performance review and evaluation CCR Joint Cabinet & Regional development Regional working Government relations LGA, WLGA and Public Service Board lead</p>	Mitchel Troy
Sara Jones	<p>Cabinet Member for Economy, Deputy Leader Lead Officer – Frances O’Brien</p> <p>Economic resilience and growth Place-making and Regeneration Town Centre investment and stewardship Development Management and Building Control Public relations / communications / marketing Skills and Employment Community broadband connectivity</p>	Llanover
Robert Greenland	<p>Cabinet Member for Governance & Strategic Planning, Deputy Leader Lead Officers – Frances O’Brien, Matthew Phillips, Matthew Gatehouse</p> <p>Local Development Plan and Strategic Development Plan Council and Executive decision-making Constitution review and implementation of change Law, ethics and standards Democracy promotion and citizen engagement Community Hubs and Contact Centre Whole authority customer service and experience</p>	Devauden
Philip Murphy	<p>Cabinet Member for Resources Lead Officers – Peter Davies, Frances O’Brien, Matthew Phillips, Julie Boothroyd</p> <p>Finance Digital and Information technology (including SRS) Human Resources, Payroll, Health and Safety Emergency Planning Strategic Procurement Land and Buildings (including - Estate, Cemeteries, Allotments, Farms) Fleet Management</p>	Caerwent

	<p>School and Community Transport (including commissioning and delivery) Property Maintenance Facilities Management (including Building Cleaning and Catering)</p>	
Paul Pavia	<p>Cabinet Member for Education Lead Officers – Will McLean, Ian Saunders</p> <p>Early Years education All age statutory education Additional learning needs / Inclusion Post 16 entitlement / offer School Standards & Improvement (incl Education Achievement Service commissioning) Community learning 21st Century Schools Programme Youth service / Outdoor Education Service / Duke of Edinburgh Award scheme</p>	Larkfield
Lisa Dymock	<p>Cabinet Member for Community Wellbeing and Social Justice Lead Officers – Frances O'Brien, Ian Saunders, Julie Boothroyd, Matt Gatehouse</p> <p>Community inequality (health, income, nutrition, disadvantage, discrimination, isolation) Advancement of the welsh language Housing Strategy, delivery /Homelessness prevention Trading standards / Environmental Health / Animal Welfare / Public Health / Licensing Community safety (including Police liaison) Registrars Service Physical activity (including Leisure centres, Sport, Active travel, Play) Countryside, biodiversity, public rights of way Tourist Information /Museums / Theatre / Attractions</p>	The Elms
Penny Jones	<p>Cabinet Member for Social Care, Safeguarding and Health Lead Officer – Julie Boothroyd</p> <p>Children's services Fostering & adoption Youth Offending Service Adult Services Whole authority safeguarding (children and adults) Disabilities Mental Health</p>	Raglan

Jane Pratt	<p>Cabinet Member for Infrastructure and Neighbourhood Services – Jane Pratt Lead Officer – Frances O’Brien, Matthew Gatehouse</p> <p>Whole authority climate change / decarbonisation lead Strategic Integrated Transport (including transport planning) Traffic network management (including road safety, car parking & civil enforcement) Public Transport Highways – County Operations / South Wales Trunk Road Authority (SWTRA) Waste collection / Recycling / Street Cleansing / Street Lighting Grounds Maintenance, parks, open spaces and public conveniences Flood alleviation, management and recovery</p>	Llanelly Hill
------------	--	---------------

Aims and Values of Monmouthshire County Council

Our purpose

Building Sustainable and Resilient Communities

Objectives we are working towards

- Giving people the best possible start in life
- A thriving and connected county
- Maximise the Potential of the natural and built environment
- Lifelong well-being
- A future focused council

Our Values

Openness. We are open and honest. People have the chance to get involved in decisions that affect them, tell us what matters and do things for themselves/their communities. If we cannot do something to help, we'll say so; if it will take a while to get the answer we'll explain why; if we can't answer immediately we'll try to connect you to the people who can help – building trust and engagement is a key foundation.

Fairness. We provide fair chances, to help people and communities thrive. If something does not seem fair, we will listen and help explain why. We will always try to treat everyone fairly and consistently. We cannot always make everyone happy, but will commit to listening and explaining why we did what we did.

Flexibility. We will continue to change and be flexible to enable delivery of the most effective and efficient services. This means a genuine commitment to working with everyone to embrace new ways of working.

Teamwork. We will work with you and our partners to support and inspire everyone to get involved so we can achieve great things together. We don't see ourselves as the 'fixers' or problem-solvers, but we will make the best of the ideas, assets and resources available to make sure we do the things that most positively impact our people and places.

SUBJECT: MonLife – Museum Service Collections Rationalisation

MEETING: Individual Cabinet Member Decision – Cllr Lisa Dymock

DATE: 14th July 2021

DIVISION/WARDS AFFECTED: Not Applicable

1. PURPOSE:

To approve the deaccessing and disposal of selected items from the collections of Monmouthshire Museums to ensure:

- Everything we have in the collections relates to our Collections Development Policy.
- We know the broad themes of our collections
- We are more informed of our future storage needs
- We know where artefacts that need accessioning are and the size of the task

2. RECOMMENDATIONS:

1. To agree the deaccessioning of and disposal actions for the proposed items in line with Section 4 of the Museums Association Disposal Toolkit. (List can be seen in Appendix 2).
2. To note this forms the fourth of a series. Further lists of items will be identified for disposal as we are able to make recommendations.

3. KEY ISSUES:

- 3.1 Accredited museums act within an agreed legal and ethical framework and have approved policies for developing their collections. This ensures that the public continue to have access to public collections – and that they continue to trust museums as responsible long-term guardians. Collections review, rationalisation and disposal are part of responsible collections management.
- 3.2 Accessioning is the process of formally recording that the governing body has taken legal ownership of objects and has committed to care for them over the long term. Deaccessioning is the formal decision by a governing body to take objects out of its accessioned collection and managing the disposal of those objects through an agreed method.
- 3.3 Collections rationalisation is a procedure whereby a museum improves its understanding of a collection so that the collection can be used more effectively for the benefit of its users. The need to rationalise a collection is driven by many different factors, and may include

uncontrolled collecting in the past, increasing pressures on storage space or the need to meet organisational priorities.

- 3.4 Controlled rationalisation enables museums to develop a systematic and strategic approach to effective management and increased use of their collections, allowing them to maximise resources, refocus collecting activity and increase public access. Although one clear outcome of a programme of rationalisation can lead to deaccessioning and the disposal of objects, rationalisation can also provide ways of considering new and different uses for collections.
- 3.5 The Accreditation Scheme for museums and galleries in the UK encourages museums to consider rationalisation as a way to address collections management issues facing museums and make collections accessible to visitors and users. A museum's approach to rationalisation will be articulated in its Collections Development Policy which will include detail on the museum's themes and priorities for collections.
- 3.6 There are many benefits to collections rationalisation:
- Ensuring that collections are relevant to the museum's vision and strategic objectives which may have evolved over time with historic collections now not fit for the current purpose of the museum
 - Developing a clearer understanding of the collections the museum holds
 - Determining the significance of objects in a collection
 - Enabling effective collections development, including contemporary collecting
 - Maximising resources – storage space, staffing and running costs, to care effectively for collections
 - Developing priorities for collections care
 - Improving storage and management of reserve collections
 - Focusing collections, so that they are of high quality and relevant to users and stakeholders
 - Providing increased access to collections
 - Using collections within the museum and with partners in different ways
 - Enhancing knowledge and information about collections and improving documentation

Please note these principals are taken from guidance documents published by Collections Trust (the UK body for museum documentation standards) and Arts Council England (the body that oversees Accreditation - the Museum Standard across the UK)

- 3.7 Managing the disposal of objects needs to be done both ethically and in response to organisational strategy. Rationalising a collection is a lengthy process; items need to be assessed, and if they are no longer relevant to the museum, where they go next needs to be assessed.

Section 4 of the Museums Association Disposal Toolkit provides full detail of acceptable methods of disposal. In brief these are:

- Transfer to an Accredited Museum
- Exchange of items between museums
- Transfer to another institution/organisation within the public domain
- Return to donor

- Sale to an accredited museum
- Transfer outside the public domain
- Sale outside the public domain
- Recycling of an item
- Destruction of an item

(In most instances the procedures would be followed in the order set out above, ie Transfer to Accredited Museum being the first procedure and destruction of an item being the last)

The following should be of key consideration when selecting a method of disposal:

- there is a strong presumption for keeping items within the public domain
- there is a strong preference for free gift or transfer to other accredited museums and items should be offered to them in the first instance
- action should be taken that ensure continued public trust in museums.

3.8 There may be a negative impact of antipathy and distrust of the service by people who thought items would be looked after in perpetuity. We will carry out the following procedures to mitigate this risk:

- Follow Museum Ethical Guidelines at all times.
- We will provide updates on the process to ensure that members of the public are aware of what we are doing at all times.
- We will keep relevant organisations up to date including MALD the body responsible for museums in Wales.
- We will keep any bodies that have provided funding towards the purchase or conservation of objects updated and consult with them at relevant stages.

4. EQUALITY AND FUTURE GENERATIONS EVALUATION (INCLUDES SOCIAL JUSTICE, SAFEGUARDING AND CORPORATE PARENTING):

4.1 The work of the Museum Service holds the wellbeing of our Future Generations at its very heart. It is well documented that participation in cultural life improves people's wellbeing and this is something considered throughout the service's work. Collections rationalisation ensures that resources are being targeted appropriately, we are caring for our collections appropriately and the artefacts we care for are telling the stories of our communities. If the method of disposal chosen is to transfer an item to another community then those communities also benefit by being able to tell their stories better.

5. OPTIONS APPRAISAL

5.1 Carrying out collections rationalisation will enable us to manage our collections better to the benefit of our communities.

5.2 This list represents: a number of larger social history items from the Abergavenny and Caldicot collections, previously held at an off-site store; small boxed items from the off site store and a store in Abergavenny Museum that relate to Social History; a number of boxes

and bags containing unstratified or unprovenanced archaeological material of no display, research or scientific value. All of these items have been assessed and a recommendation to keep or dispose has been made, by both the present museum curators and an archaeologist who is an expert in this specific material.

- 5.3 This process involved assessing 833 collection items in total, from which 224 more have now been identified for disposal (in addition to those previously agreed on lists 1, 2 and 3).

Further disposals from the 833 items have been proposed but the team are currently carrying out additional research on the objects to support their proposals or calling on expert advice to inform the process.

Further lists will be brought for decision when these processes have been carried out.

6 EVALUATION CRITERIA

- 6.1 We have referred to industry standards and best practice throughout and have consulted the following documents to help inform the review:

- Spectrum 5.0 (The UK Museums' Collection Management Standard) 'Collections Review' and 'Deaccessioning and disposal' chapters
- Museums Association Disposal Toolkit
- University College London Collections Review Toolkit (https://www.ucl.ac.uk/culture/sites/culture/files/cr_toolkit_final.pdf)
- Collections Trust : A guide to selecting a review methodology for collections rationalisation
- CyMal (2013) why do we have it- A significance process and template (CyMAL is the predecessor to MALD: Museums Archives and Libraries Wales – Welsh Government)
- South East Museum Development Programme: A guide to Collections Review and Rationalisation.
- SHARE Museums East: Collections Rationalisation: Planning for action

7. REASONS:

Like many museums across the UK, the stores housing Monmouthshire Museum Collections are reaching full capacity. In 2017 we carried out a study during which the percentage fullness of each item of shelving/cupboard was visually estimated. The mean fullness of shelving/cupboard housing the collections is 86% demonstrating that the space available for future collecting is very limited and there is little space for the collections to grow and remain relevant. There is also the issue of overcrowding with many of the collections stored on the floor. In addition the volume of Non Accessioned objects across the whole of the Museums Service collections is 23%. This means 23% of collections are not catalogued or recorded making it difficult for the service to use the collections to tell their stories to members of our communities.

8. RESOURCE IMPLICATIONS:

This work can be considered in two parts:

- A pilot study was set up to consider items in our off site store. This list represents items from that work. Money to carry out that work was allocated from museum fundraising.
- Further work across all the collections is being carried out as part of a National Lottery Heritage Fund Award. Two project assistants have been appointed to carry out the work, alongside our Collections Management Officer who is leading on the project and whose hours have been increased and funded by the NLHF.

9. CONSULTEES:

MonLife DMT
Cabinet member for Museums
Museum Staff

10. BACKGROUND PAPERS:

Appendix 1: Equality and Future Generations Evaluation

Appendix 2: Recommendation for Disposal

Appendix 3: Monmouthshire Museums Collections' review process: April 2019

Appendix 4: Collection's Review Scoring grid

<https://www.museumsassociation.org/collections/disposal-toolkit>

<https://326gtd123dbk1xdkdm489u1q-wpengine.netdna-ssl.com/wp-content/uploads/2017/11/Deaccessioning-and-disposal.pdf>

11. AUTHOR: Rachael Rogers, Museums Manager

**12. CONTACT DETAILS: Tel: 01873 854282
E-mail: rachaelrogers@monmouthshire.gov.uk**

This page is intentionally left blank



<p>Name of the Officer Rachael Rogers</p> <p>Phone no: 01873 854282 E-mail: rachaelrogers@monmouthshire.gov.uk</p>	<p>Please give a brief description of the aims of the proposal</p> <p>To approve a recommendation from Museums Staff to dispose of selected museum artefacts via an approved Collections Rationalisation Procedure.</p>
<p>Name of Service area</p> <p>Museums</p>	<p>Date 14th July 2021</p>

Are your proposals going to affect any people or groups of people with protected characteristics? Please explain the impact, the evidence you have used and any action you are taking below.

Protected Characteristics	Describe any positive impacts your proposal has on the protected characteristic	Describe any negative impacts your proposal has on the protected characteristic	What has been/will be done to mitigate any negative impacts or better contribute to positive impacts?
Age	Collections rationalisation will enable us to determine how we are better able to serve our audiences with protected characteristics.	There may be a negative impact on the older age group as they are the ones who may have been donors of these items. This impact may be one of antipathy and distrust of the service that they had thought was going to look after their donations in perpetuity.	<p>Museum Ethical Guidelines will be followed at all times to ensure we remain within Museum Industry Standards at all times. We will provide full information on the process to ensure that members of the public are aware of what we are doing at all times. We will keep relevant organisations up to date including MALD the body responsible for museums in Wales.</p> <p>We will also prepare written statements of explanation available at each museum for custodians to hand out; provide positive press stories e.g. publicising successful 'rehomings' in other museums etc.</p>
Disability	As above	As above	As above
Gender reassignment	As above	As above	As above
Marriage or civil partnership	As above	As above	As above
Pregnancy or maternity	As above	As above	As above
Race	As above	As above	As above
Religion or Belief	As above	As above	As above

Protected Characteristics	Describe any positive impacts your proposal has on the protected characteristic	Describe any negative impacts your proposal has on the protected characteristic	What has been/will be done to mitigate any negative impacts or better contribute to positive impacts?
Sex	As above	As above	As above
Sexual Orientation	As above	As above	As above
Welsh Language	As above	As above	As above
Poverty	As above	As above	As above

Page 6

2. **Does your proposal deliver any of the well-being goals below?** Please explain the impact (positive and negative) you expect, together with suggestions of how to mitigate negative impacts or better contribute to the goal. There's no need to put something in every box if it is not relevant!


Well Being Goal	Does the proposal contribute to this goal? Describe the positive and negative impacts.	What actions have been/will be taken to mitigate any negative impacts or better contribute to positive impacts?
A prosperous Wales Efficient use of resources, skilled, educated people, generates wealth, provides jobs	Our resources are stretched and it is a better use of them to focus on collections relevant to our communities.	Carrying out the review will enable us to work out how to most effectively use our resources to enable us to contribute to a prosperous Wales through Culture.




Well Being Goal	Does the proposal contribute to this goal? Describe the positive and negative impacts.	What actions have been/will be taken to mitigate any negative impacts or better contribute to positive impacts?
A resilient Wales Maintain and enhance biodiversity and ecosystems that support resilience and can adapt to change (e.g. climate change)		
A healthier Wales People's physical and mental wellbeing is maximized and health impacts are understood	The positive effects of cultural activities on people's wellbeing is well documented. Ensuring our collections are relevant to our particular communities and our visitors will contribute towards this.	Carrying out the rationalisation will enable us to work how to most effectively use our resources to enable us to contribute to a healthier Wales through Culture
A Wales of cohesive communities Communities are attractive, viable, safe and well connected	<p>Telling the stories of all our communities through our work is important in making our communities feel connected and attractive. Ensuring our collections relate directly to our stories will enable us to do this in a more focused way.</p> <p>There may be a negative impact on communities of antipathy and distrust of the service that they had thought was going to look after donations in perpetuity.</p>	<p>Carrying out the rationalisation will enable us to work how to most effectively use our resources to enable us to contribute to a Wales of cohesive communities.</p> <p>Museum Ethical Guidelines will be followed at all times to ensure we remain within Museum Industry Standards at all times. We will provide full information on the process to ensure that members of the public are aware of what we are doing at all times. We will keep relevant organisations up to date including MALD the body responsible for museums in Wales.</p> <p>We will also prepare written statements of explanation available at each museum for custodians to hand out; provide positive press stories e.g. publicising successful 'rehomings' in other museums etc.</p>
A globally responsible Wales		


Well Being Goal	Does the proposal contribute to this goal? Describe the positive and negative impacts.	What actions have been/will be taken to mitigate any negative impacts or better contribute to positive impacts?
Taking account of impact on global well-being when considering local social, economic and environmental wellbeing		
A Wales of vibrant culture and thriving Welsh language Culture, heritage and Welsh language are promoted and protected. People are encouraged to do sport, art and recreation	Collections Rationalisation means we can focus on the appropriate culture and heritage for our area.	Carrying out the rationalization will enable us to work out how to most effectively use our resources to enable us to contribute to a Wales of vibrant culture and thriving Welsh language.
A more equal Wales People can fulfil their potential no matter what their background or circumstances		

130911

How has your proposal embedded and prioritised the sustainable governance principles in its development?

Sustainable Development Principle	Does your proposal demonstrate you have met this principle? If yes, describe how. If not explain why.	Are there any additional actions to be taken to mitigate any negative impacts or better contribute to positive impacts?
 <p>Balancing short term need with long term and planning for the future</p>	The Museum Stores are extremely full. This work will enable us to look at the long term and to plan for the future.	

Sustainable Development Principle	Does your proposal demonstrate you have met this principle? If yes, describe how. If not explain why.	Are there any additional actions to be taken to mitigate any negative impacts or better contribute to positive impacts?
 <p>Working together with other partners to deliver objectives</p> <p>Collaboration</p>	<p>This will involve working closely with our colleagues across museums to ensure we are following industry procedures and staying with in ethical guidelines.</p>	
 <p>Involving those with an interest and seeking their views</p> <p>Involvement</p>	<p>We have consulted with museum bodies and followed UK wide principals.</p>	<p>There may be a negative impact on communities of antipathy and distrust of the service that they had thought was going to look after donations in perpetuity.. Museum Ethical Guidelines will be followed at all times to ensure we remain within Museum Industry Standards at all times. We will provide full information on the process to ensure that members of the public are aware of what we are doing at all times. We will keep relevant organisations up to date including MALD the body responsible for museums in Wales.</p> <p>We will also prepare written statements of explanation available at each museum for custodians to hand out; provide positive press stories e.g. publicising successful 'rehomings' in other museums etc.</p>
 <p>Putting resources into preventing problems occurring or getting worse</p> <p>Prevention</p>	<p>The Museum Stores are almost at capacity and we need to address this in order to plan for the future.</p>	<p>Properly considered collections rationalization will help us to prioritise the needs of our service and ensure we can put in place the best resources to care for them.</p>

Sustainable Development Principle	Does your proposal demonstrate you have met this principle? If yes, describe how. If not explain why.	Are there any additional actions to be taken to mitigate any negative impacts or better contribute to positive impacts?
 <p>Considering impact on all wellbeing goals together and on other bodies</p>	<p>It is well documented that participation in cultural life improves peoples well-being and this is something we consider throughout our work.</p>	

4. Council has agreed the need to consider the impact its decisions has on the following important responsibilities: Social Justice, Corporate Parenting and Safeguarding. Are your proposals going to affect any of these responsibilities?

Describe any positive impacts your proposal has	Describe any negative impacts your proposal has	What will you do/ have you done to mitigate any negative impacts or better contribute to positive impacts?
Social Justice	Our role as a museum service is to tell the stories of everyone in Monmouthshire. We would like to ensure we do this more effectively.	
Safeguarding	N/A	N/A
Corporate Parenting	N/A	N/A

5. What evidence and data has informed the development of your proposal?

- Discussion amongst Monmouthshire Museums Team
- Spectrum 5.0 'Collections Review' and 'Deaccessioning and disposal' chapters
- Museums Association Disposal Toolkit
- University College London collections review Toolkit (https://www.ucl.ac.uk/culture/sites/culture/files/cr_toolkit_final.pdf)
- Collections Trust : A guide to selecting a review methodology for collections rationalisation
- CyMal (2013) why do we have it- A significance process and Template (CYMAL = predecessor of MALD – Museums Archives and Libraries Division of Welsh Government)
- South East Museum Development Programme: A guide to Collections Review and Rationalisation.
- SHARE Museums East: Collections Rationalisation: Planning for action (SHARE = Museums Development Programme for the East of England)

6. SUMMARY: As a result of completing this form, what are the main positive and negative impacts of your proposal, how have they informed/changed the development of the proposal so far and what will you be doing in future?

The work we do in the Museums Service holds the wellbeing of our Future Generations at its very heart. It is well documented that participation in cultural life improves peoples well being and this is something we consider throughout our work. Whilst the idea of disposal can be difficult within a museum context, the Accreditation Scheme for museums and galleries in the UK encourages museums to consider rationalization as a way to address collections management issues facing museums and make collections accessible to visitors and users. This means improvements to the service in the longer term.

7. ACTIONS: As a result of completing this form are there any further actions you will be undertaking? Please detail them below, if applicable.

What are you going to do	When are you going to do it?	Who is responsible
--------------------------	------------------------------	--------------------

8. VERSION CONTROL: The Equality and Future Generations Evaluation should be used at the earliest stage, such as informally within your service, and then further developed throughout the decision making process. It is important to keep a record of this process to demonstrate how you have considered and built in equality and future generations considerations wherever possible.

Version No.	Decision making stage	Date considered	Brief description of any amendments made following consideration
1.	Enterprise DMT (List 1)	14 th June 2019	No Change
	ICMD	10 th July 2019	No Change

	Enterprise DMT (List 2)	23 rd Sept 2019	No Change
	ICMD		No Change
	Enterprise DMT (List 3)		No Change
	ICMD	3 rd Dec 2020	No Change
	MonLife DMT (List 4)	23 rd June 2021	No Change
	ICMD	14 th July 2021	

This page is intentionally left blank

Number	Description
A1982.753	Metal blinker plates
T1492	Earthenware bottle
T1531	Archaeology find
T1546	Archaeology find
T1704	Archaeology find
T1703	Archaeology find
T1717	Archaeology find
T1540	Archaeology find
T1647	Archaeology find
T1770	Archaeology find

T1772	Archaeology find
T1533	Archaeology find
T1537	Archaeology find
T1548	Archaeology find
T1550	Archaeology find
T1547	Archaeology find
T1702	Archaeology find
T1552	Archaeology find
A1984.296	Mayors chair
A0.8	Wine bottle

T1560	Wooden box, 'Valencia Raisin'
T1656	Archaeology find
A1994.1 P 3(?)	Archaeology find
A1994.1 P	Archaeology find
T1554	Archaeology find
T1539	Archaeology find
T1536	Archaeology find
T1535	Archaeology find
T1559	Archaeology find
No number	Archaeology find

T1549	Archaeology find
T1542	Archaeology find
T1530	Archaeology find
T1555	Archaeology find
T1543	Archaeology find
1528	Archaeology find
No number	Archaeology find
T1544	Archaeology find
T1485	Archaeology find
T1737	Archaeology find

T1766	Archaeology find
T1774	Archaeology find
T1769	Archaeology find
T1771	Archaeology find
T1768	Archaeology find
T1659	Archaeology find
T1667	Archaeology find
T1722	Archaeology find
T1724	Archaeology find
T1651	Archaeology find

T1652	Archaeology find
T545	Archaeology find
T1649	Archaeology find
A1994.1	Archaeology find
T1557	Archaeology find
T1538	Archaeology find
T1732	Archaeology find
A1979.402	Trivet, circular base
A1979.428	Glass bottle
A1985.44	Glass bottle
A1979.479	Glass bottle

A1978.620	Glass bottle
A1982.709	Chisel
A1982.699	Bit
No number	Frame
Frame of M1243	Frame
Frame of M1242	Frame
No number	Frame
No number	Frame
T1699.2	Clear jar
T1699.1	Green Jar
A1979.517	Bottle
A1993.35	Doll, Spanish, bullfighter
A1993.51	Doll, unknown country
A1993.50	Doll, unknown country
A1993.49	Doll, unknown country
A1982.653	Hinge

A1982.366	Glass bottle
A1982.468	Green glass jar
A1971.7	Double-sided egg cup
A1980.83	Sample bag
A1993.36	Doll, Spanish, bullfighter
A1993.37	Doll, flamenco dancer with hat
A1993.46	Doll, African costume
A1993.48	Doll, possibly German costume
A1993.43	Doll, Dutch costume
A1993.44	Doll, Dutch costume
A1993.45	Doll, German costume
A1993.42	Doll, Greek costume
A1993.47	Doll, possibly Greek costume
A1993.41	Doll, Israeli costume
A1993.40	Doll, Scottish costume
A1993.38	Doll, Swiss national costume
A1982.375	Glass jar
A1972.15	Rummer
A1993.54.2	Stand
A1993.52	2 sets of castanets
A1990.17.a & b	Queen Elizabeth II's coronation souvenir, cup and saucer
T1699.5	Lumpfish roe jar
A1982.593	Tripod iron cooking pot

T1699.3	Coffee jar
T1699.4	Relish jar
A1982.461b	Hexagonal Green glass bottle
A1982.692	Garden fork
A1976.23.1	Quoit
A0.502.2	Draw knife
A0.103.1-4	Cups
A1982.628	3-sided iron spanner
A1976.36	Curd grinder
A1988.164	Leclanché Battery
A0.667	Workman's lamp "KGCE"
T1746	Curd breaker
A1981.269	Tile polish
No number	Sign
No number	Sign

A1990.31 a	Pub sign
T1672	2 plates
T1671	Brown glazed pot
A1982.704	Bit
A1982.703	Bit with a chain
A1982.738	Archaeology find
A1977.80.e	Fragment of a bottle
T1748	Curd breaker
T1668	Archaeology find Abergavenny
A1993.39	Doll, Welsh national costume
A1980.120	Biscuit tin
A1966.22	Model of a Canadian train engine
A1993.27	Copper funnel

T1932 (piano)	Harmonium and stool
A0.258.0	Nut cracker in shape of dog
T1935	Large wooden wheel
T1917	Gas heater
A0.4884	Straps of harness
A0.4885	Straps of harness
A0.910	Bowl
A0.513	Iron pincers
A0.7107.3	Round dish
A0.7107.4	Round dish
A0.621	Potato Ricer
A0.463	Metal food chopper
A0.4890	Photograph frame
T224	Juice extractor
A0.602	Egg slicer
A0.442	Brace with brass fittings
A0.462	Fire tongs

A1983.919 / A1983.919.1	Vibro-Electra massage unit with box
A0.502.1	Curved draw-knife
No number	Writing desk top
T1754	Walking stick
A1982.775	Cloth halter
A1982.754	Tin of leather polish
A0.101	Pepper pot
T2563	Pot cupboard
A0.461	Fire tongs
T1513	Stone mortar
A0.642	Carafe
T1698	Blue Glass jar
T2564	Round table
T171	Neatsfoot Compound screw top tin

A1979.276	Polivit
T1521	Bits of iron and tools
T254	3 wooden farm animals
A1983.1182	Wooden trinket box
T83	Floriata cross hook
T1696	Glass Bottle
T1694	Earthenware pot
No number	Display basket
T1697	Glass jar
A2005.167	Remington lady shaver
A1983.32	Metal tool
T179	Brace with handle
T167	Enamel mug
T159	Fork with wooden handle
T221	Metal tweezers
T158	Small glass dish
T157	Basket
T924	Jigsaw puzzle 'Irish Channel Steamers'
T926	Jigsaw puzzle 'My Lady's Garden'
T923	Jigsaw puzzle 'Scenes from the Commonwealth'
T925	Jigsaw puzzle 'Sir Malcolm Campbell's Blue Bird'
T922	Jigsaw puzzle 'South America Continent'
A0.4824	Chemist's equipment, glass
No number	Book press
T1613	box with glass lid
T1611	Ceiling rose
T1674	Glass bell shaped cover
T1641	Tool
T1741	Wooden rod
T1609	Cast iron object

T156	Kettle
T1669	Saw
T1784	Saw
No number	Display box
T1618	Folding table
A2005.152	Tea pot stand
T253	Wax doll fragments
T1496	Tin
T1913	Two stands
T1529	Archaeology find
A1982.735	Rectangular piece of sandstone
A1987.115	Palethorpes sausage box
A1964.93	Jack
A1966.39	Knife
A1966.38	Large spanner
A2012.02	Portable sewing machine
A1980.246	Scottish soldier doll
A1981.342.a & b	2 decorated plates
T59	Archaeology find

A1980.179	Top from churn
Part of A1959.1	Piece of wood
T1522	cart or trolley, wooden, small, hand pulled
C658-0 / C580-0	Cider press
A1982.701	Bit with rubber mouth piece
A1982.698	Saddle Tree
T1498	Harness
A1982.697	Saddle Tree
unnumbered Rogiet sign	sign "Rogiet"
T1662	Archaeology find
T1723	Archaeology find

T1735	Archaeology find
T1721	Archaeology find
T1793	Archaeology find
A1985.127.a-b	Archaeology find
T1553	Archaeology find

Information	Reason
<p>Group of metal blinkers plates to go inside horse blinkers or blinders. Possible local donorship, inconclusive</p>	<p>A sample of three of each size have been kept, along with some papers that were bundled with them. Unnecessary to keep entire collection given our large amount of saddlery items.</p>
<p>Find is from Flannel street, but does not have any provenance. Once had a handle. 17th-19th c. earthenware bottle.</p>	<p>Archaeology object with no clear context.</p>
<p>AOS (Orchard site) 1972-73 Daub 058-536</p>	<p>Material is in poor condition, and is not usable for research purposes. No display or engagement potential</p>
<p>MILL ST. AOS (Orchard Site) 1972-73 AOS 73 CHARCOAL</p>	<p>Material is in poor condition, and is not usable for research purposes. No display or engagement potential</p>
<p>MILL ST. AOS (Orchard Site) 1972-73 SLAG</p>	<p>Material is in poor condition, and is not usable for research purposes. No display or engagement potential</p>
<p>MILL ST. AOS (Orchard Site) 1972-73 SLAG</p>	<p>Material is in poor condition, and is not usable for research purposes. No display or engagement potential</p>
<p>Abergavenny Excavation 1962-69 Soil Samples</p>	<p>Material is in poor condition, and is not usable for research purposes. No display or engagement potential</p>
<p>AOS / Orchard site 1972 Roof tiles and Slag</p>	<p>Material is in poor condition, and is not usable for research purposes. No display or engagement potential</p>
<p>Ewers Garden Minerals , EG site - Slag</p>	<p>Material is in poor condition, and is not usable for research purposes. No display or engagement potential</p>
<p>Flannel St. (1962-1969) SLAG Level: H</p>	<p>Material is in poor condition, and is not usable for research purposes. No display or engagement potential</p>

Flannel street (1962-1969) Slag O38 (2 bags)	Material is in poor condition, and is not usable for research purposes. No display or engagement potential
MILL ST. AOS (Orchard Site) 1972 Slag, coal and coke.	Material is in poor condition, and is not usable for research purposes. No display or engagement potential
MILL ST. AOS (Orchard Site) 1972-73 SLAG	Material is in poor condition, and is not usable for research purposes. No display or engagement potential
MILL ST. AOS (Orchard Site) 1972-73 SLAG	Material is in poor condition, and is not usable for research purposes. No display or engagement potential
MILL ST. Orchard Site AOS (Orchard Site) 1972-73 SLAG 065	Material is in poor condition, and is not usable for research purposes. No display or engagement potential
MILL ST. Orchard Site SLAG 065	Material is in poor condition, and is not usable for research purposes. No display or engagement potential
MILL ST. Orchard Site SLAG 065	Material is in poor condition, and is not usable for research purposes. No display or engagement potential
MILL ST. Site Unknown SLAG	Material is in poor condition, and is not usable for research purposes. No display or engagement potential
Small mayoral chair, donated by Monmouth District Council	Better example of a mayoral chair in collection, with higher display and engagement potential
Green glass bottle, damaged, lost neck, stamped with 'Charles Edwards Brewery Ltd. Llanfoist'. No donor information.	Better examples of identical or similar bottles from this brewery have been retained.

Part of Basil Jones' shop collection	Better examples of similar items from this collection have been retained.
Box with pottery fragments, Abergavenny excavations 1962-69, Flannel Street. Pots are partially reconstructed.	Bulk finds, not published. It isn't suitable for research purposes, but could have uses for education, as we have some information about it.
19 Cross street Amphora	Bulk finds. The material comprises unidentified body sherds, rendering them unusable for future investigation.
19 Cross street Grayware fragments A1994.1 P/T1648	Bulk finds. The material comprises unidentified body sherds, rendering them unusable for future investigation.
AOS (Orchard Site) 1972-73 Roman tiles 400 400A 412 420	Bulk finds. The material has no clear stratification or documentation with it, rendering it unusable for future investigation.
AOS (Orchard site) 1972-73 Tile - stone AOS 73	Bulk finds. The material has no clear stratification or documentation with it, rendering it unusable for future investigation.
AOS (Orchard site) 1972-73. Tile - stone / ceramic. AOS 73. Roman / Post Med	Bulk finds. The material has no clear stratification or documentation with it, rendering it unusable for future investigation.
AOS / Orchard Site 1972-1973 Pottery - Body Sherds 001	Bulk finds. The material has no clear stratification or documentation with it, rendering it unusable for future investigation.
AOS / Orchard Site 1972-1973 Pottery - Body Sherds 001	Bulk finds. The material has no clear stratification or documentation with it, rendering it unusable for future investigation.
AOS / Orchard Site 1972-1973 Pottery - Body Sherds 002 002x 002a 004 004A 004B	Bulk finds. The material has no clear stratification or documentation with it, rendering it unusable for future investigation.

AOS 72 Orchard site tiles - stones 058 X 058A	Bulk finds. The material has no clear stratification or documentation with it, rendering it unusable for future investigation.
AOS 72 Roof tiles stone and ceramics	Bulk finds. The material has no clear stratification or documentation with it, rendering it unusable for future investigation.
AOS 73 Tile stone and ceramic	Bulk finds. The material has no clear stratification or documentation with it, rendering it unusable for future investigation.
AOS Orchard site mortar	Bulk finds. The material has no clear stratification or documentation with it, rendering it unusable for future investigation.
AOS Orchard site. Bulk tiles. Finds from Abergavenny Orchard Site excavations 1972-73, tiles - stone, ceramic.	Bulk finds. The material has no clear stratification or documentation with it, rendering it unusable for future investigation.
AOS stone tiles	Bulk finds. The material has no clear stratification or documentation with it, rendering it unusable for future investigation.
AOS/ Orchard Site 1972-1973 AOS 72 Brick/ mortar 073-228	Bulk finds. The material has no clear stratification or documentation with it, rendering it unusable for future investigation.
AOS/Orchard site 1972 AOS 72/012A Body Sherds	Bulk finds. The material has no clear stratification or documentation with it, rendering it unusable for future investigation.
AOS72 Roof tiles 004	Bulk finds. The material has no clear stratification or documentation with it, rendering it unusable for future investigation.
Archaeological finds, Abergavenny excavation 1962-69, Neville street	Bulk finds. The material has no clear stratification or documentation with it, rendering it unusable for future investigation.

Flannel street (1962-1969) pottery Levels: A, B, C	Bulk finds. The material has no clear stratification or documentation with it, rendering it unusable for future investigation.
Flannel street (1962-1969) pottery Levels: E, F, H.	Bulk finds. The material has no clear stratification or documentation with it, rendering it unusable for future investigation.
Flannel street 1962-69 pottery	Bulk finds. The material has no clear stratification or documentation with it, rendering it unusable for future investigation.
Flannel Street 1962-69, Clay pipe Stems	Bulk finds. The material has no clear stratification or documentation with it, rendering it unusable for future investigation.
Flannel street mix context pottery bone shell	Bulk finds. The material has no clear stratification or documentation with it, rendering it unusable for future investigation.
Flannel street pottery	Bulk finds. The material has no clear stratification or documentation with it, rendering it unusable for future investigation.
Flannel street Pottery fragments	Bulk finds. The material has no clear stratification or documentation with it, rendering it unusable for future investigation.
Flannel street pottery fragments	Bulk finds. The material has no clear stratification or documentation with it, rendering it unusable for future investigation.
Flannel Street Pottery fragments 1962-9.	Bulk finds. The material has no clear stratification or documentation with it, rendering it unusable for future investigation.
Flannel street unpublished bulk pottery	Bulk finds. The material has no clear stratification or documentation with it, rendering it unusable for future investigation.

Flannel street Unpublished bulk pottery	Bulk finds. The material has no clear stratification or documentation with it, rendering it unusable for future investigation.
Mill Street AOS Sherds AOS (Orchard site) 1972-73. Body Sherds and Pottery	Bulk finds. The material has no clear stratification or documentation with it, rendering it unusable for future investigation.
Pottery Abergavenny excavation 1962-69 Flannel street excavations 1962-69	Bulk finds. The material has no clear stratification or documentation with it, rendering it unusable for future investigation.
Redware fragments A1994.1/T1694	Bulk finds. The material has no clear stratification or documentation with it, rendering it unusable for future investigation.
T1557 AOS / Orchard Site 1972 Pottery - Body Sherds	Bulk finds. The material has no clear stratification or documentation with it, rendering it unusable for future investigation.
Tile ceramic roof. AOS 73	Bulk finds. The material has no clear stratification or documentation with it, rendering it unusable for future investigation.
Unstratified material, location of excavation unknown (Possibly Flannel St.)	Bulk finds. The material has no clear stratification or documentation with it, rendering it unusable for future investigation.
Trivet, iron. Two tiers, the top comprising two circles, with another underneath.	Donated by a local, low engagement or display potential. Multiple similar objects in collection.
Bottle: "Facey & Sons" wholesale bottlers Abergavenny. Local donor	Duplicate - identical items in better condition in collection
Donated by the Torfaen Museum Trust. Facey & Sons" wholesale bottlers Abergavenny. Bottle made by Price of Bristol. Chip in neck	Duplicate - identical items in better condition in collection
Mineral water bottle with marble and rubber inside. Bottle made by Powell's of Bristol, labelled 'David Scott Abergavenny'. Large chip in rim. Donated by local shop.	Duplicate - identical items in better condition in collection

Broken bottle, labelled 'David Scott Mineral Water Works Abergavenny'. Donated by local	Duplicate - identical or very similar item in better condition in collection
Chisel, no handle, from local wheelwright.	Duplicate - identical or very similar items from same donor in better condition in collection.
Saddlery item, possibly from Williams and Sons Saddlers.	Duplicate - we have similar items already in our large saddlery collection.
No information on donor or origin. In bad condition.	Generic frame in poor condition
Shallow gold frame with glazing. The frame is missing some of its decorations. Frame that previously held M1243: Photograph of Motor Rally at the Hendre. Local donor	Generic frame, photograph now stored separately. Condition poor, decision made not to reunite frame with picture.
Shallow gold frame with no glazing. The frame is missing some of its decorations. Has a label J. Howard Preston - 'art photographer' from Wye Valley Studio Monmouth. Frame that previously held M1242: Photograph of Prince of Wales at Hendre. CS Rolls at wheel of car. Local donor	Generic frame, photograph now stored separately. Condition poor, decision made not to reunite frame with picture.
Frame that previously held M1241 (Monmouth collection) in poor condition. The frame is missing some of its decorations.	Generic frame. Condition poor, decision made not to reunite frame with picture
Frame that previously held F27 (Nelson collection). Frame does not correspond to painting in style.	Generic frame. Decision made not to reunite frame with picture
Clear bottle marked "ES & Co registered" from Basil Jones donation.	Generic object does not contribute to local story of shop. Duplicate in the collection
Green glass jar with pattern, marked "ES & Co registered" from Basil Jones donation.	Generic object does not contribute to local story of shop. Duplicate in the collection
Bottle marked 'Boots Cash Chemist' donated by a local.	Generic object does not contribute to local story.
Doll have a in pink suit. Generic representation of a bullfighter. Donated by a local.	Generic object does not contribute to local story.
Doll have a pink dress, with a black and gold apron. Generic representation of an unknown traditional costume. Donated by a local.	Generic object does not contribute to local story.
Doll have a striped skirt, basket. Generic representation of an unknown traditional costume. Donated by a local.	Generic object does not contribute to local story.
Doll have a white and skirt, blue waistcoat. Generic representation of an unknown traditional costume. Donated by a local.	Generic object does not contribute to local story.
Donated by a local. No information about where it came from. Poor condition.	Generic object does not contribute to local story.

Donated by the Parks Department, Monmouthshire District Council.	Generic object does not contribute to local story.
Donated by the Parks Department, Monmouthshire District Council.	Generic object does not contribute to local story.
Egg cup with two holders, design to be use for either duck or hen eggs. Turned middle section. Donated by a local.	Generic object does not contribute to local story.
Free sample bag of Batchelors Dried Onions, donated by a local.	Generic object does not contribute to local story.
Generic representation of a bullfighter. Donated by a local.	Generic object does not contribute to local story.
Generic representation of a flamenco dancer. Donated by a local.	Generic object does not contribute to local story.
Generic representation of an unknown African costume. Donated by a local.	Generic object does not contribute to local story.
Generic representation of possibly a German traditional costume. Donated by a local.	Generic object does not contribute to local story.
Generic representation of the Dutch traditional costume. Donated by a local.	Generic object does not contribute to local story.
Generic representation of the Dutch traditional costume. Donated by a local.	Generic object does not contribute to local story.
Generic representation of the German traditional costume. Donated by a local.	Generic object does not contribute to local story.
Generic representation of the Greek traditional costume. Donated by a local.	Generic object does not contribute to local story.
Generic representation of the Greek traditional costume. Donated by a local.	Generic object does not contribute to local story.
Generic representation of the Israeli traditional costume. Donated by a local.	Generic object does not contribute to local story.
Generic representation of the Scottish traditional costume. Donated by a local.	Generic object does not contribute to local story.
Generic representation of the Swiss traditional costume. Donated by a local.	Generic object does not contribute to local story.
Glass jar marked "Massons extract". Donated by Parks Department, Monmouthshire District Council.	Generic object does not contribute to local story.
Glass rummer, donated by a local.	Generic object does not contribute to local story.
Probably used for a doll. Donated by a local.	Generic object does not contribute to local story.
Souvenir from Spain. Donated by a local.	Generic object does not contribute to local story.
Souvenir made for Queen Elizabeth II's coronation in 1953, pale cream with full colour transfer print of the queen on front, flags on back and inside, gold decoration on rim and handle. Donated by a local.	Generic object does not contribute to local story.
Caviar style Lumpfish roe jar. From Basil Jones donation.	Generic object does not specifically contribute to local story
Cooking Pot. No information on donor or origin.	Generic object does not specifically contribute to local story

Glass jar with coffee beans inside. From Basil Jones donation.	Generic object does not specifically contribute to local story
Jar of 'Gentleman's relish'. From Basil Jones donation.	Generic object does not specifically contribute to local story
Medicine or poison bottle inscribed "Not to be taken". On Bottom "10 76 H." Found in Abergavenny by the Parks Department, no further info	Generic object does not specifically contribute to local story.
Donated by a local. Gardener's hand fork made of sheet iron. 7 tines. In bad condition.	Generic object does not specifically contribute to local story.
Donated by a local. One of a pair. Incomplete set.	Generic object does not specifically contribute to local story. Duplicate in collection
Donated by a local. One of two donated by him. Used for stripping bark off tree, circular shaped blade attached to 2 wooden handles.	Generic object does not specifically contribute to local story. Duplicate in collection
Fluted white cups. All are cracked. Wedgwood plain teacups with white with gilt edge on rim and handle. Donated by local shop (business not related to objects).	Generic object does not specifically contribute to local story. Poor display and engagement potential
Donated by a person from outside Monmouthshire.	Generic object from outside our collection area.
Donated by a local. This object is cover in rust.	Generic object in poor condition. Poor display and engagement potential
Donated by a local.	Generic object that does not specifically contribute to local story. H&S risk due to battery having hazardous components.
Hazard signal lamp, yellow, complete. K.J.C.E is marked on the side. It has 3 bull's eyes orange reflectors. which are surrounded with white paint. Yellow in colour. One side of the box opens for a candle to be inserted. 6 small ventilators. No donor information	Generic object, does not contribute to local story. Very similar example already in collection.
Donated by a local. Curd breaker, no stand or handle.	Generic object, duplicate in collection. No local connection beyond donor
Tin of 'C.W.S., Pelaw Tile Polish'. Donated by a local.	Generic object, no local significance or any relation to the donor's trade.
Sign Caerleon 1/4 Usk 8 1/4 Newport 3 1/4 Bulmore 1 Newbridge-on-usk 5 Llantrissant 6. In poor condition, paint is peeling off part of its body.	Generic object, poor display and engagement potential
Usk sign, metal. In poor condition, paint has lose intensity.	Generic object, poor display and engagement potential

Pub sign made for the Skirrid inn, with image of a mountain and writing "Skirrid 1100 AD". Found in the barn of the maker's house, donated by a local.	Generic object, poor display and engagement potential. No proved local use.
Archaeological find of three ceramic plates, partially reconstructed, found in 17 Neville Street, branded "BEST GOODS". Poor condition.	Generic object, without archaeological research potential. It's a duplicate in the collection.
Archaeological find without any information related to it. Partially reconstructed.	Generic object, without archaeological research potential. It's a duplicate in the collection.
No information on donor or origin.	Generic object. We have other duplicates in the collection.
No information on donor or origin.	Generic object. We have other duplicates in the collection.
Two firebrick fragments found at Garnddyrys forge near Blaenavon. One is stamped "Hill Hampton&Co" with part of stamp broken off, the other is unmarked.	Incomplete brick fragments. Found locally, but as a complete example from this group is being kept, it was not thought necessary to keep all three as these two are poor examples.
Fragment of 'Thomas Bath' bottle, stoneware originally ginger beer, from Thomas Bath (local brewery). Found in local garden	Incomplete, better example of object from this business in collection.
Curd breaker, spindle and wooden frame." Part of T1746. Local donor	Incomplete, little local story, better example of object in collection
From Flannel street. Bone handle carved	Item has no provenance, clear stratification or documentation with it, rendering it unusable for future investigation.
Doll in welsh costume - black plastic hat, white small lace trimmed red flannel overskirt, black and white checked underskirt, lace pinafore, red flannel bag, leek broach fastening shawl.	Local donor, generic Welsh dress with no local connection.
Biscuit tin contained 'McVities's Party Pieces' chocolate biscuits, target game on lid. Magnetic blocks included for tossing at target.	Local donor, no further local connection
Model of a train. Inside reads "Largest passenger locomotive in the world. 290 tons weight." One outer edge reads "British Empire Exhibition London 1924." The other edge reads "Canadian National Railways".	Local donor, no further local connection
Small copper funnel with brass hanging ring. No donor info, listed as a purchase. Handmade, purpose/use unknown	No donor info, no local connection

Harmonium/pipe organ and matching stool manufactured by 'Schiedmayer & Soehne'. Bought from Waddington & Sons Ltd. 29 & 31 City Road Cardiff. No further information	No donor or location connection. Instrument is not in usable condition.
No donor. Made of iron and shaped like a dog. Pull tail and mouth opens to crack a nut. Patent no. 273480.	No donor, no local connection
Large cart wheel painted green and dark brown. No donor or further info.	No donor, no local connection, poor display and engagement potential
Gas heater with 4 columns and flat top, corroded. No further information	No donor, no local connection, poor display and engagement potential. Poor condition
Leather harness straps with metal chain for decoration.	No donor, no local connection, we have duplicates with clear donorship in our large saddlery collection.
Leather harness straps, 19th century.	No donor, no local connection, we have duplicates with clear donorship in our large saddlery collection.
Clay bowl, no donor. "FR" and Shield makers mark.	No donor, no local connection.
No donor iron, metallic painted. Made by George Plumpton (Warrington, England). Joint rusted.	No donor, no local connection.
One of a pair of hand painted, turned round dishes. No donor. Wood is badly split in several places and varnish deteriorating.	No donor, no local connection.
One of a pair of hand painted, turned round dishes. No donor. Wood is badly split in several places and varnish deteriorating.	No donor, no local connection.
Potato ricer (hinged vegetable presser/masher)	No donor, no local connection.
Steel blade, iron screw like pieces in blade, handle missing.	No donor, no local connection.
Wooden photograph frame with ridged design and green velvet mount. The frame was once gilded. Missing back piece. Can't trace back to any photograph in our collection.	No donor, no local connection.
Alexander juice extractor with instruction booklet number 374	No donor, no local connection.
Egg slicer. Blue paint on wooden handle chipped. Metal rusting on slicing mechanism. No donor	No donor, no local connection.
Wooden brace, no donor.	No donor, no local connection. Multiple other braces in collection.
Tongs, iron, ornate decorations between handle and tip of tongs.	No donor, no local connection. Multiple other tongs in collection.

Printing on box reads ' BRITISH MADE / REGD. DESIGN. PATENTS PENDING'. Purchased from Market Hall, Abergavenny.	No donor, no local info aside from local place of purchase. Documents from inside box, which were relevant to our collection but unrelated to the box itself, have been kept.
No donor. Possibly missing parts, unconfirmed.	No donor, no local information. Duplicate - multiple draw knives in collection.
Lid covered in green "velvet/soft leather?". We don't have the rest of the object. No information found. Green cover is torn and wear.	No information, no local connection. Poor condition, poor display and engagement potential
Walking stick with nail in tip and crozier shaped handle, plain wood. Pencil writing on side of stick seems to read "castle inn farm" but hard to make out.	No information. There is no evidence the writing has anything to do with provenance of object
Cloth halter with price tag. No donor or further info	No local connection, does not contribute to local story.
Tin of Vanner & Prest's superior harness composition- a water proof leather polish. No donor.	No local connection, duplicate of object already in collection. Poor condition.
White metal case with blue glass liner. Cut away decoration to show blue glazed pottery liner. Britannia metal. Pierced holes in lid, small decoration on top.	No local connection, no donor information.
Cabinet, round, one door with knob handle, with inset marble top. No donor information	No local connection, no donor information.
No donor. Iron, ornate decorations on tongs part, lock missing.	No local connection, no donor information.
Engraved with flower design on 1 side. No further information	No local connection, poor display and engagement potential
Fluted green glass carafe or vase	No local connection, poor display and engagement potential
Medicine blue glass jar, labelled "CANTH", probably to hold Cantharis: a homeopathic remedy obtained from the insect <i>Lytta vesicatoria</i> ; common names are Spanish fly or blister beetle.	No local connection, poor display and engagement potential
Table in 2 parts, turned centre stand with 3 legs, triangular base. Currently on loan to Newtown Textile museum. No donor information	No local connection, poor display and engagement potential
Neatsfoot Compound, Blended - non-edible, VP Trade Mark, For Harness &c, Vanner & Prest Great Dunmow Essex, Proprietors Carr & Day & Martin Ltd, contents 20 fluid ounces, Made in England. Neatsfoot oil is used as a conditioning, softening and preservative agent for leather.	No local connection, we have duplicates or similar products. Likely donated from local saddlers, but unconfirmed.

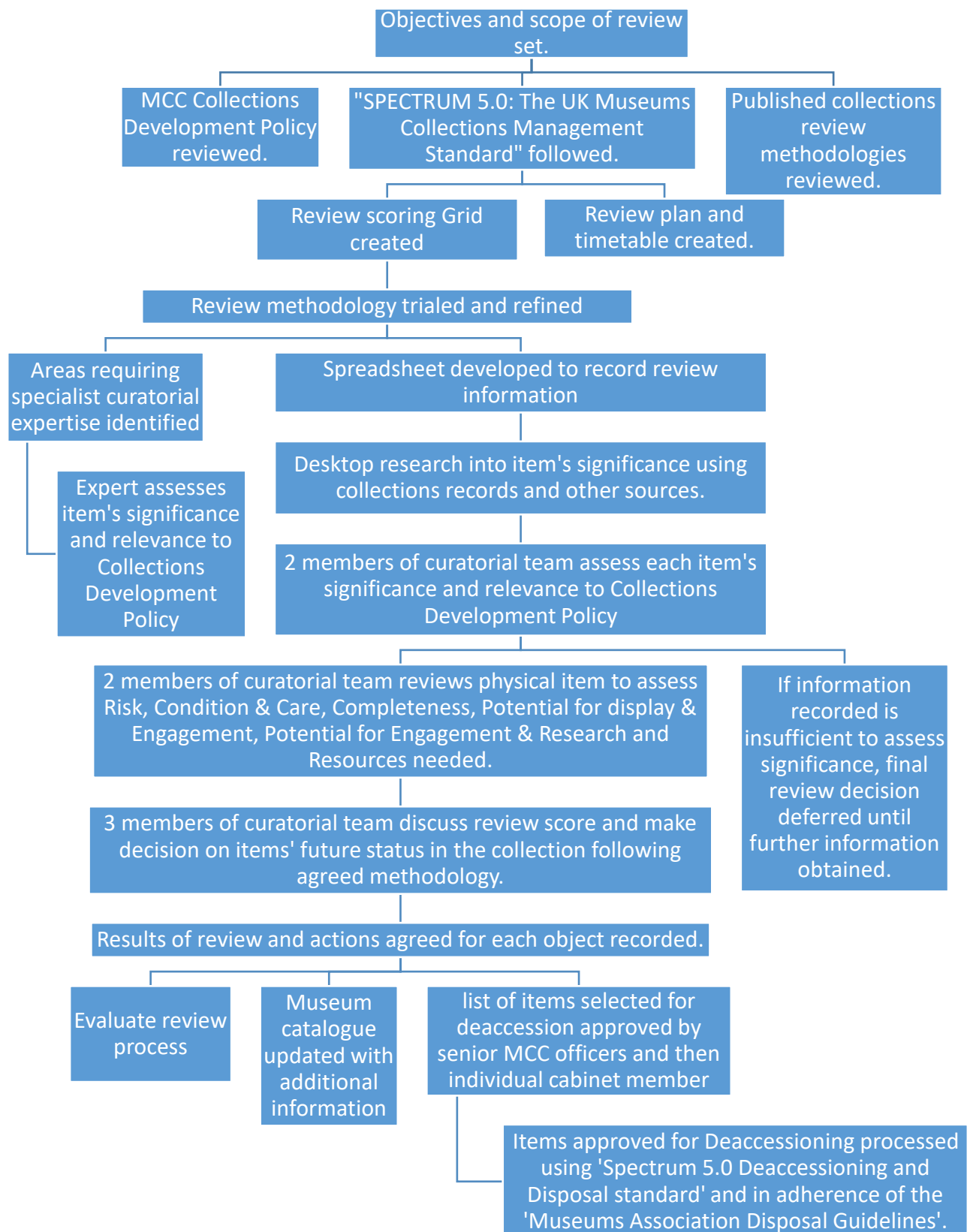
Labelled 'Polivit, the perfect silver cleaner' with directions, c. 1950. Non-local donor.	No local connection. Generic, mass produced item.
17 iron objects, no donor. Objects are a cast iron fender, cast iron grate, some cast iron tools heads with hafting holes, cast iron splitting wedges, cast iron pins with ring, cast iron tools bits, and two unknown cast iron tools (roughly rectangular with a single channel cut into each one)	No local significance
A sheep, a goat, and a cow. No donor.	No local significance
Box with metal catch and hinges, lid broken.	No local significance
Brass with three fixing pins. No donor.	No local significance
Chemist's bottle labelled "SP CAMPH" , probably held Camphor. No information on donor or origin.	No local significance
Coarse pottery, marked on the bottom "FR" within a ring of leafs.	No local significance
Display basket for Windsor Gorse soaps. Dianthus, Fern, Lavender by Robert Windsor	No local significance
Glass jar labelled "POT: IODID". No donor information.	No local significance
Lady shaver 'Remington 60' in box with flex with attached plug and two sided cleaning brushes, no donor.	No local significance
Metal tool with a square key wrench and a level.	No local significance
No donor.	No local significance
No donor.	No local significance
No donor.	No local significance
No donor.	No local significance
No donor.	No local significance
No donor.	No local significance
No donor.	No local significance
No donor.	No local significance
No donor.	No local significance
No donor.	No local significance
No donor.	No local significance
No donor.	No local significance
No donor.	No local significance
No donor. Made by S.Kay, Stockport.	No local significance
No information on donor or origin.	No local significance
No information on donor or origin.	No local significance
No information on donor or origin.	No local significance
No information on donor or origin.	No local significance
No information on donor or origin.	No local significance
No information on donor or origin.	No local significance
No information on donor or origin. Possibly a rack or a grill. In poor condition.	No local significance

Portable kettle brand 'The Wasp'. No donor.	No local significance
Saw with 2 wooden handles, blade very corroded. No donor information.	No local significance
Saw with wooden handle and corroded blade. No information on donor or origin.	No local significance
Small rectangular display case with a lock.	No local significance
Table, folding, box-like appearance when folded, 'W. Scott & Sons patent'.	No local significance
Tea pot stand decorated with grapes, plums and leaves design and straw edging. Donated by a local.	No local significance
These fragments are not from any of the dolls in our collection. No donor.	No local significance
Tin of CWS cream crackers in poor condition.	No local significance
Two long stands. No information on donor or origin.	No local significance
Find from Abergavenny Orchard Site excavations, 1972-73. Small fragments of bricks with pieces of mortar.	Material is in poor condition, and is not usable for research purposes. No display or engagement potential
Possibly donated by a local, inconclusive. No further local info	No specific contribution to local story. Poor display and engagement potential.
Sausage box. Donor donated a mincer stored in this box. Box bears no further relation to the mincer.	Non local donor, no further information. Does not contribute to local story. Appears to simply have been packaging for the mincer.
A Jack-Gauge used for turning millstones. Wooden handle with wide head, a hole through the middle and an iron casing round the outside. A large, round-headed screw on the top. A flat-headed screw at the end of the handle. Donated from mill outside county. Missing a part. Heavily eaten by woodworm.	Non-local donor, came from mill outside the county
Knife, possibly a table knife. Engraving on blade - G R and crown; Rogers & Sons. Bone handle, iron blade, steel ferule at the end of the handle. Donated from mill outside the county.	Non-local donor, came from mill outside the county
Spanner. Donated from mill outside the county.	Non-local donor, came from mill outside the county
Small portable sewing machine. Donated from outside county.	Non-local donor, no local connection.
Generic representation of a Scotsman. Doll's costume is stained with dry glue.	Object in poor condition, no local significance.
Two plates decorated with multi coloured pieces of broken pottery and marbles. Donated by a local.	Object in poor condition. Poor display and engagement potential
3 lumps of French burr stone from Lower Mill, Govilon, 1972. Object in poor condition, it have lost any identification features of a mill stone.	Object is in fragments, better examples from the area in collection.

Butter churn, lid and handle	Only a small part of the butter churn, in poor condition.
Piece of wood related to A1959.1, Longcase Clock. Part shows woodworm damage.	Part is not visually related to the clock, in poor condition.
Wooden sack barrow, probably handmade. Part of large Basil Jones' shop collection.	Part of Basil Jones collection. Not in great condition, low display and engagement potential.
Cider Press: Made by George Cindrey, Alveston near Bristol, c. 1860. The cider press was owned by local person in Little Bush, Earlswood. It travelled around the Chepstow rural area, Llanfair Discoed, Llanvaches, Shirenewton etc. during the late 19th and early 20th centuries. It was used during the 1940/45 war, at Little Bush, Earlswood. Poor condition, too large and heavy to safety manipulate.	Poor condition, beyond our resources and ability to care for in the long term. Needs to go to a museum more equipped to do so.
Saddlery item, possibly from Williams and Sons Saddlers. Rubber part dried and cracked.	Poor condition, duplicate - we have similar items already in our large saddlery collection.
Saddlery item, possibly from Williams and Sons Saddlers. The leather is dry and cracked in some parts.	Poor condition, duplicate - we have similar items already in our large saddlery collection.
From Williams & Sons Saddlers. The leather has cracked and become rigid.	Poor condition, duplicate item - similar objects already in our large saddlery collection.
Saddlery item from Williams & Sons Saddlers. Leather has dry and cracked.	Poor condition, duplicate - similar items from same donor already in our large saddlery collection.
Road sign. Rogiet is a village between Caldicot and Magor. No donor information. The paint on the sign has faded.	Poor engagement potential. Road signs already in collection.
Flannel street F30 & F45 Unsorted Post-Medieval pottery	The material has no clear stratification or documentation with it, rendering it unusable for future investigation.
Flannel street Mixed material	The material has no clear stratification or documentation with it, rendering it unusable for future investigation.

<p>Flannel street Unstratified finds.</p>	<p>The material has no clear stratification or documentation with it, rendering it unusable for future investigation.</p>
<p>Tiles, Flannel Street Abergavenny excavations 1962-69</p>	<p>The material has no clear stratification or documentation with it, rendering it unusable for future investigation.</p>
<p>Pieces of Wood unknown site "Caldicot"</p>	<p>The material has no clear stratification or documentation with it. Additionally, material is in poor condition. Not usable for research purposes.</p>
<p>Brick from a house. Made in Pontypool.</p>	<p>The material has no provenance or documentation with it, rendering it unusable for future investigation. No local connection.</p>
<p>Water mill c.1960 Stone Roof Tiles.</p>	<p>Unknown material. No documentation relating to it.</p>

Monmouthshire Museums Collections' review process: April 2019



This page is intentionally left blank

Collection's Review Scoring grid. Draft 2. December 2018- Based UCL Collections Review Rubric, CyMAL (2013) "Why do we have it"- A significance Process and Template and Collections Trust (2014) A guide to selecting a review methodology for collections rationalisation, and adapted to our needs following discussion with MCC Museum staff

Method: Assign grade to object for each category based on statements below and enter score into spreadsheet. Grade is assigned based on lowest relevant statement in each section. Add supporting comments in "Reason" column of spreadsheet.

Decision: If object scores any **C** or **D** in **Significance, Condition, or Risk**- consider for disposal.

If object scores 2 **D**'s in **Completeness, Display, Engagement or Resource**- consider for disposal.

	Significance & Relevance to Collections Development policy	Risks associated with caring and using the object	Condition and care	Completeness	Potential for display and use	engagement and research	Resource to manage, care, use
A	<ul style="list-style-type: none"> • Of clear national, regional, local or community significance. • Relevant to the Collections Development Policy. • Object known to be unique or rare. 	<ul style="list-style-type: none"> • Low risks of hazards. 	<ul style="list-style-type: none"> • Stable material. • Good condition. • No conservation problems. • Minor cleaning needed. 	<ul style="list-style-type: none"> • Either fully complete or the missing elements are not integral to its importance and significance. • Appears to be in its original condition. 	Potential to be: <ul style="list-style-type: none"> • Permanently on display • Star object/"wow" factor. • Strongly identified in the public's mind with the organisation or location. 	<ul style="list-style-type: none"> • Regularly used or strong potential for public engagement • Regularly or strong potential for research use. 	Existing resources are appropriate.
B	<ul style="list-style-type: none"> • Of clear local or community value. • Relevant to the Collections Development Policy. 	<ul style="list-style-type: none"> • Low risk at present but hazards could be exposed without appropriate collections management. 	<ul style="list-style-type: none"> • Stable material but needs monitoring. • Fair condition • Some risk of decay and deterioration. • Some conservation treatment desirable. 	<ul style="list-style-type: none"> • Complete or missing only a small number of parts. • In near original condition, or any adaptations are consistent with its history and use. • Any missing parts do not make it unrecognisable. 	Potential to: <ul style="list-style-type: none"> • Engage visitor interest and stimulate discussion. • Contribute to a permanent or temporary exhibition. 	<ul style="list-style-type: none"> • Potential for use in public engagement, • Potential for research use. 	Small amount of additional resource required.
C	<ul style="list-style-type: none"> • Of assumed but unproven or of little specific local, community or organisational importance but possibly some historical, aesthetic artistic, scientific or social interest. • Outside the Collections' Development Policy. • Similar to other item within Monmouthshire Museums' collections. 	<ul style="list-style-type: none"> • Some hazards exist but these can be safely managed with appropriate PPE. • Size or weight of object requires additional resource to safely move. 	<ul style="list-style-type: none"> • Unstable material. • High risk of deterioration- immediate action required. • Poor condition. • Major areas of loss. • Significant conservation investment required to prepare for use or display, 	<ul style="list-style-type: none"> • Incomplete • Object has been significantly adapted and these changes do not relate to the significant periods of its history. 	<ul style="list-style-type: none"> • No current public focus but may have some potential for this in the future. • Not known to have been used in displays. 	<ul style="list-style-type: none"> • Little potential for public engagement use. • Little potential for research use. 	Significant additional resource required
D	<ul style="list-style-type: none"> • Not considered to have aesthetic, Artistic, historical, scientific or social interest. • Outside the Collections Development Policy. • Duplicate of existing item. 	<ul style="list-style-type: none"> • Caring for or using object presents immediate hazard. • Size or weight of objects presents risk and requires significant additional resource to safely move/provide access. 	<ul style="list-style-type: none"> • Very unstable material. • Beyond repair. • Very poor condition. • Unsustainable conservation investment required. • Poses a risk to other collections. 	<ul style="list-style-type: none"> • Incomplete and its original function or appearance is not clear. • Is unrecognisable. • May be a fake 	<ul style="list-style-type: none"> • Not suitable for display. • No potential for public focus 	<ul style="list-style-type: none"> • No potential for public engagement use. • No potential or research use 	Unsustainable resource required.

This page is intentionally left blank